

Remember

1. All pesticides are poisonous.
2. Purchase the right pesticide for the job.
3. Read and heed the label.
4. Store in a secure and ventilated place.



Table of Pesticide Label Signal Words & Relative Toxicities

Signal Word	Toxicity Category	Toxicity
DANGER	I	Highly Toxic
WARNING	II	Moderately Toxic
CAUTION	III & IV	Low Toxicity

Know your Signal Words and be guided by them when purchasing pesticides.

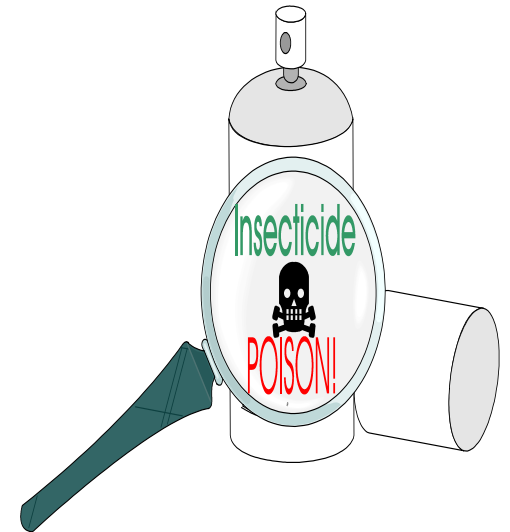
Select the least toxic pesticide that will do the job.



Department of Agriculture
Cayman Islands Government

C. I. Department of Agriculture
P. O. Box 459
Grand Cayman KY1-1106
#181 Lottery Rd.
Bodden Town
Cayman Islands
PH: (345)-947-3090
FAX: (345)-947-6501
Email: ciagriculture@gov.ky
www.doa.gov.ky

Pesticide
Awareness
For Everyone!!
For Everyone!!



**Safe Use & Handling of
Pesticide Products**

Know How to Protect Yourself from Pesticide Exposure

Responsible Purchasing

If you have a pest problem and must use a pesticide, protect yourself, your family and your pets. Pesticides labeled WARNING or DANGER are extremely toxic. Instead, select and purchase pesticides that are less toxic. These carry the mark CAUTION on the front panel of the label.

Mixing

In the event that the recommended pesticide is one that must be mixed in water:



- ◆ Do not mix more than you need.
- ◆ Never use a rate that is not recommended on the label.
- ◆ Always wear proper personal protective equipment while mixing
- ◆ Never handle nor mix pesticides with bare hands. Always wear a pair of nitrile gloves.

Safe Use

Be sure to read carefully and follow all labeled instructions. Remember that all pesticides, including aerosols, are poisons and can cause serious health problems. Do not spray to overkill.



Safe Application

- ◆ Always wear Personal Protective Equipment (PPE) as recommended for use on the label. A full set of PPE consists of Hat, Goggles, Respirator, Nitrile Gloves, Overalls and Water boots.
- ◆ Do not spray pesticides from a leaking or malfunctioning equipment.
- ◆ Direct spray lance to avoid getting spray onto yourself through wind drift.
- ◆ Do not spray during windy conditions. Early mornings or late evenings are usually calm.
- ◆ Use all of the mixed pesticides during a spray application as the mixture will lose its effectiveness during storage.
- ◆ Avoid spillage of pesticide and if it occurs, clean up immediately. Get immediate medical help for any accidents.
- ◆ Do not handle food or drink while spraying pesticides

Safe Post-Application

- ◆ Clean the mixing area thoroughly after spraying.
- ◆ Do not re-enter field that has been sprayed until after the recommended re-entry interval
- ◆ Keep people and animals out of freshly sprayed areas.
- ◆ Rinse equipment after each use and triple rinse empty pesticide containers before disposal.
- ◆ Do not reuse empty pesticide containers, puncture them and dispose of them properly.
- ◆ Bathe to remove any pesticide from the skin. Wash overalls etc. separate from regular clothes.

Safe Storage

- ◆ Store only the smallest feasible amount of pesticide.
- ◆ Store pesticides safely and securely in a cool well ventilated location.
- ◆ Do not store pesticides near food or feed.
- ◆ Store all pesticides out of the reach of children and domestic animals.

