

Selection and Categories:

Pay close attention to the specific categories in the livestock line-ups. No animal will be admitted to a category that does not match the appearance of that animal. All animals are subject to be denied entry into a category by CIAS or DOA staff. Some useful definitions to remember for the show day are:

- Polled— possessing no horns (*Image 6*)
- Purebred—bred from a recognized breed without a mixture of any other breed over many generations
- Crossbred—an animal produced by the mating of animals from different breeds
- Heifer- a young cow that has never had a calf
- Dry cow—cow not producing milk

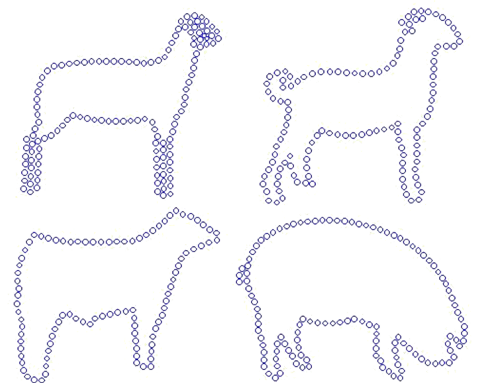


Image 6: Polled cow



CAYMAN ISLANDS
DEPARTMENT OF AGRICULTURE
working together, growing together

Preparing Your Livestock for the Agriculture Show



C. I. Department of Agriculture
P.O. Box 459
181 Lottery Road, Lower Valley
CAYMAN ISLANDS KY1-1106
Ph: (345) 947-3090
Fax: (345) 947-6501
Email: agriculturegov.ky

Preparing for the Agriculture Show

When preparing for the livestock show, there are steps to consider before selecting your animals for exhibits. Some of these items include:

1. **Halter Breaking:** Avoid bringing animals that are wild and not easily handled. Bringing untamed animals poses a threat to workers and the general public on show day. Try tying your animal up, every day, starting one month before the show. It is best to practice this during feeding time since this will act as positive reinforcement.
2. **Deworming:** Have your animals dewormed, de-ticked and if necessary hoof-trimmed (goats) before the show date. These services are provided by DOA staff free of charge for show animals. Bookings can be made through the reception area at the Department (see back for contact information).
3. **Washing/Clipping:** Don't bring dirty or muddy animals for the show day. Presentation goes a long way to judges. Properly wash and groom your animals. Trimming hair where needed.

Key Fact Emphasize the tail-head area along the top and down the tail. A higher tail-head gives a taller and more leveled top-line appeal.



Image 1: Show Bull

Health

An animal should **NOT** be brought to the show if it possesses the following conditions:

- Abscesses/Abnormal swellings
- Lesions/ Lacerations/Cuts
- Ticks/Fleas/Lice/Bot-Flies/Warts/Ringworm
- Diarrhea/Nasal or eye discharges
- Signs of Infectious Diseases
- Broken or Dislocated limbs
- Physical Deformities

NOTE: Any animal found exhibiting these conditions on show day will be subject to disqualification.



Image 2: Tick

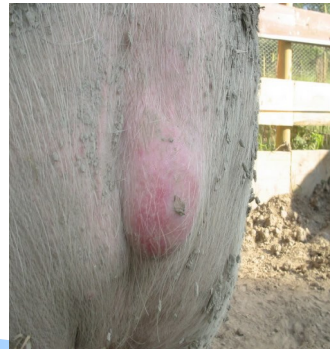


Image 3: Abscess

Feeding

Before show day it has been a common practice to over-feed livestock. Fattening of livestock for show day needs to start at least 6 weeks prior to the day of the show. To do so, moderately increase grain/concentrate levels in the animals diet.

Remember to always keep roughage (hay) in your animals feeding regime, but reduce this amount slightly starting at 6 weeks.



Image 4: Roughage



Image 5: Concentrate

If signs of bloat or acidosis occurs, reintroduce normal amounts of roughage back into the animals diet.

Transport

During the two feeds before transporting your animal to the show, feed your animal two-thirds of the normal feed amount. This will help them travel better and help to avoid stress.

Avoid unnecessary stops or detours. Try to get your animal to the show grounds with the least amount of stress on the animal. Transport for livestock to show grounds is available by the DoA.

Upon arrival, avoid immediate feeding or watering your animals. Allow them to adjust to their surroundings for at least 2 hours prior to feeding.

NOTE: At the show grounds all feeding is conducted by DoA Staff **ONLY**. No farmer or farm-hand is to retrieve feed from DoA supplies.